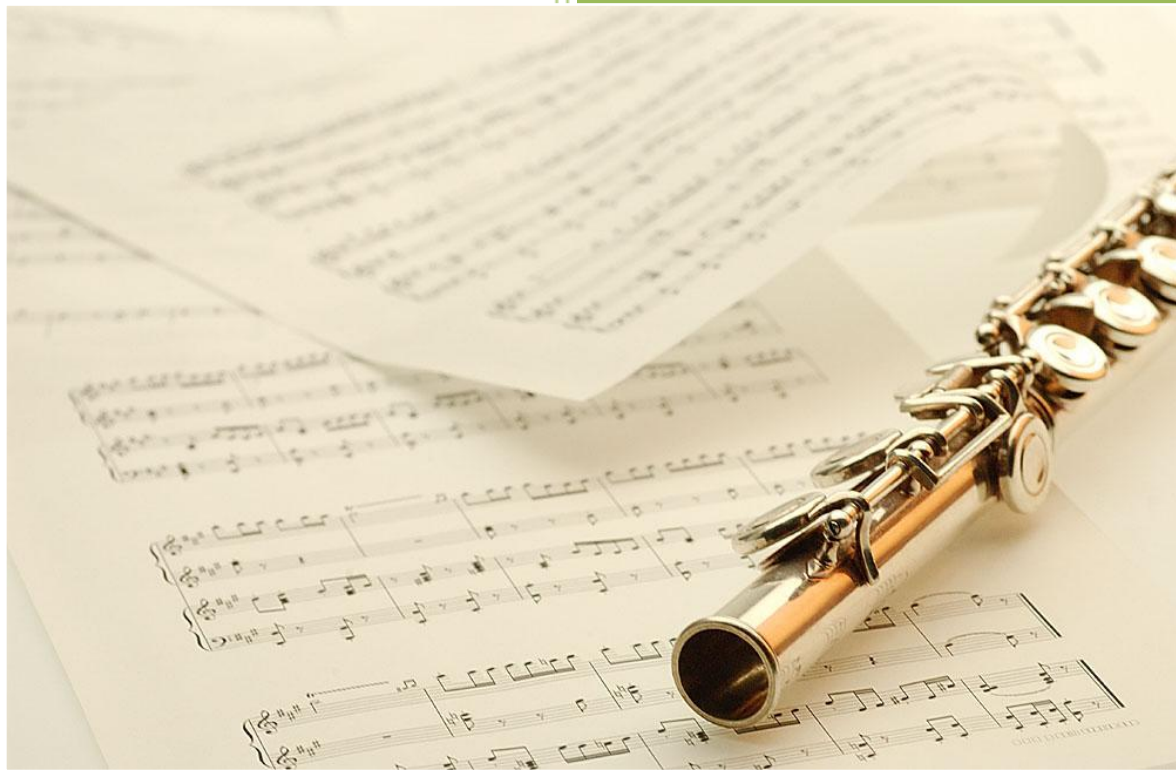


Custom Shows in PowerPoint



PowerPoint Alchemy is a division of

Technology Trish Ltd

Registered Address - Suites 2 & 3, Bow Street Chambers
1 - 2, Bow Street, Rugeley, Staffs, WS15 2BT
Registered in England & Wales 5780175

John Wilson

PowerPoint Alchemy

© Technology Trish 2007

PowerPoint Alchemy

Introduction

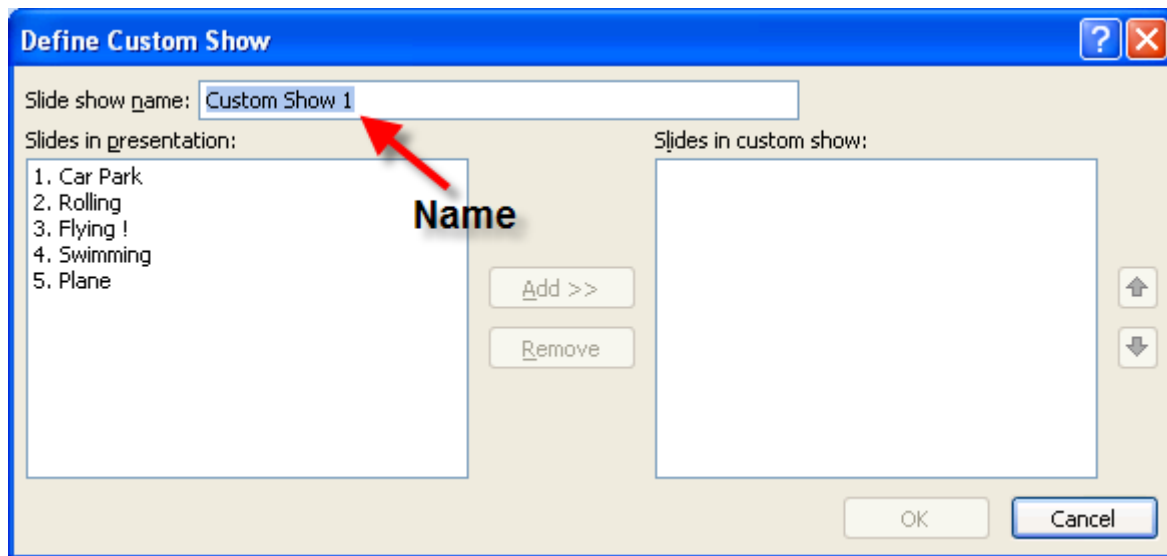
Custom Shows are one of the most useful aspects of PowerPoint but they are rarely used to their full extent. This tutorial looks at the major uses and also the use of some very useful additions which are provided in the form of a PowerPoint Add In.

The Basics

Let's look first at creating a simple custom show which is an alternative short form of the main presentation.

First open your presentation and in versions before 2007 choose Custom Shows from the Slide Show Menu. In version 2007 this is in the Slide Show Tab.

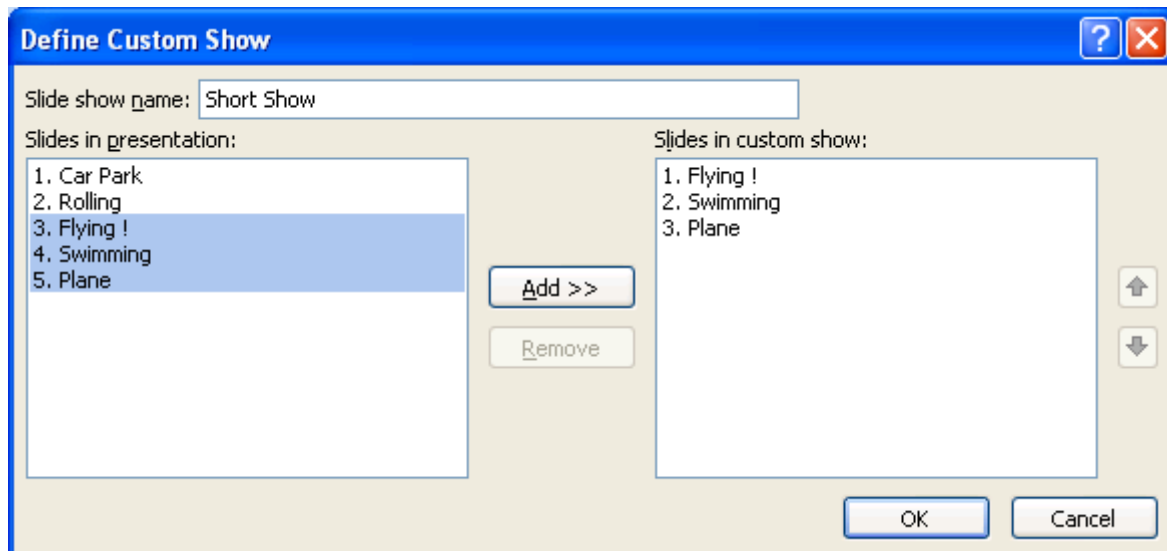
Either way click on "NEW" to create a new custom show. You will see a list of all the slides in your presentation.



Select the slides you want to use in the custom show and then click "ADD". The default name of Custom Show x is not very useful so change it to a more descriptive one. Note you may not have duplicate names in a single presentation.

You can create more custom shows and you may re-use slides as often as required (even more than once in a single custom show.) The file size will not increase greatly.

Look at this example

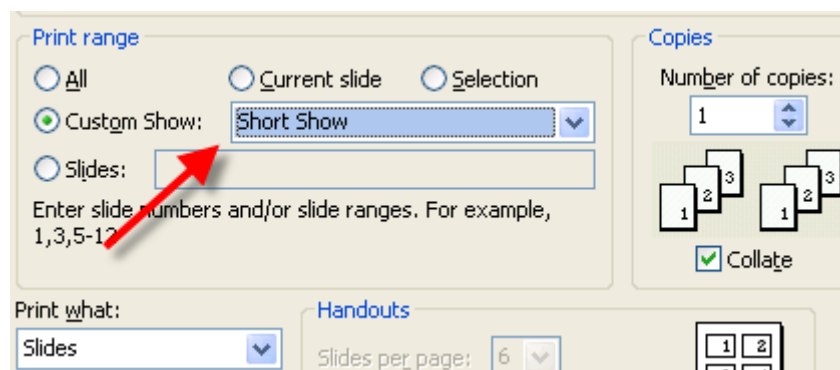


Our slides have descriptive names so we can fairly easily tell which slide is which. It would be good if we could see a thumbnail though!

Note that the three slides in the Custom Show ("Short Show") are the original slides 4-6 and they are in the same order as in the original presentation. Often this is what you need but supposing that you want a different order. It would be nice if you could select the slides in the correct order with ctrl + click and they would appear in that order in the custom show. Unfortunately they don't! If you need to do this you will have to select individual slides and add then one by one or use the up / down arrows to reorder your slides in the custom show. Both methods are time consuming and if your slides have more generic titles, confusing! It annoyed us so much we wrote code to get round it. CUSTOM-CUT is an affordable PowerPoint Add In that allows you to select the slides IN ORDER in slide sorter view (with a visible thumbnail so slides are easy to identify) and then create a custom show IN THAT ORDER.

Printing

It's simple to print out just your custom show slides. In the print dialogue simple choose "Custom Show" in the print range section.



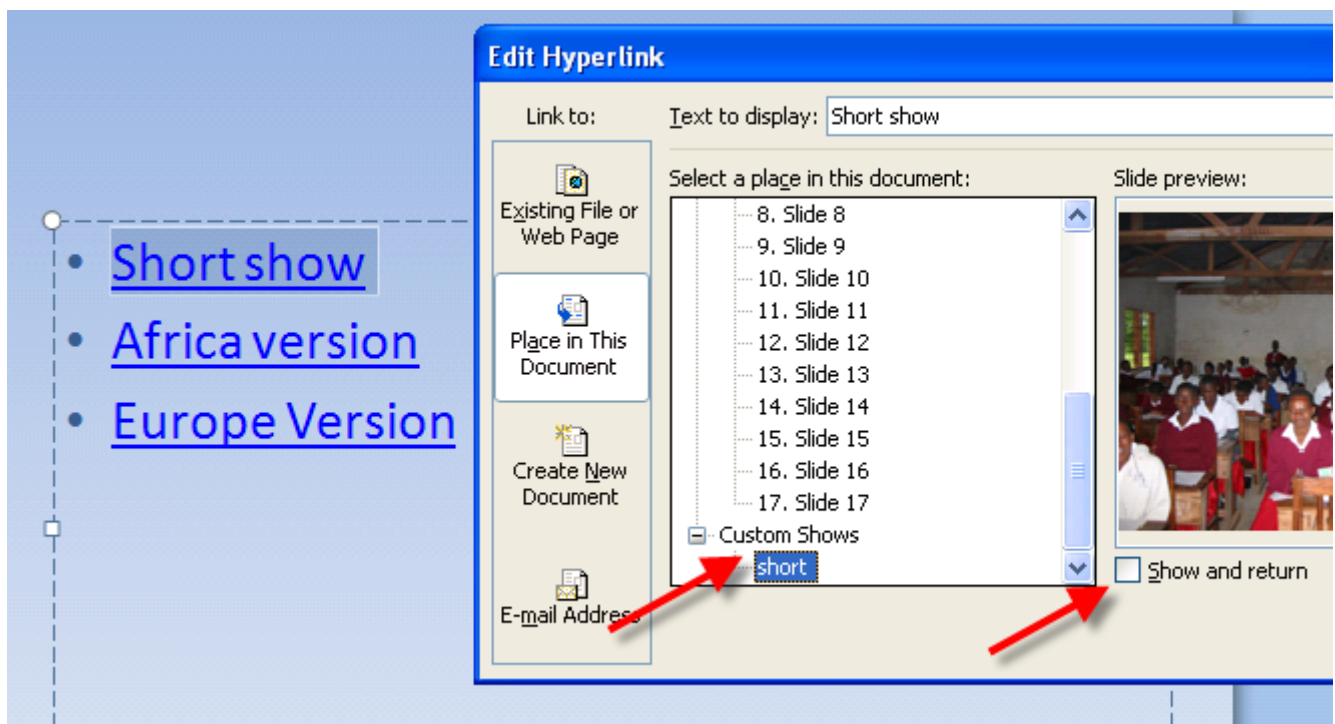
There is a problem here though slide numbers will be the original numbers and will not reflect the new order. Yep this REALLY annoyed us and it looks very unprofessional and yes CUSTOM-CUT can fix this too!

Showing the Custom Show

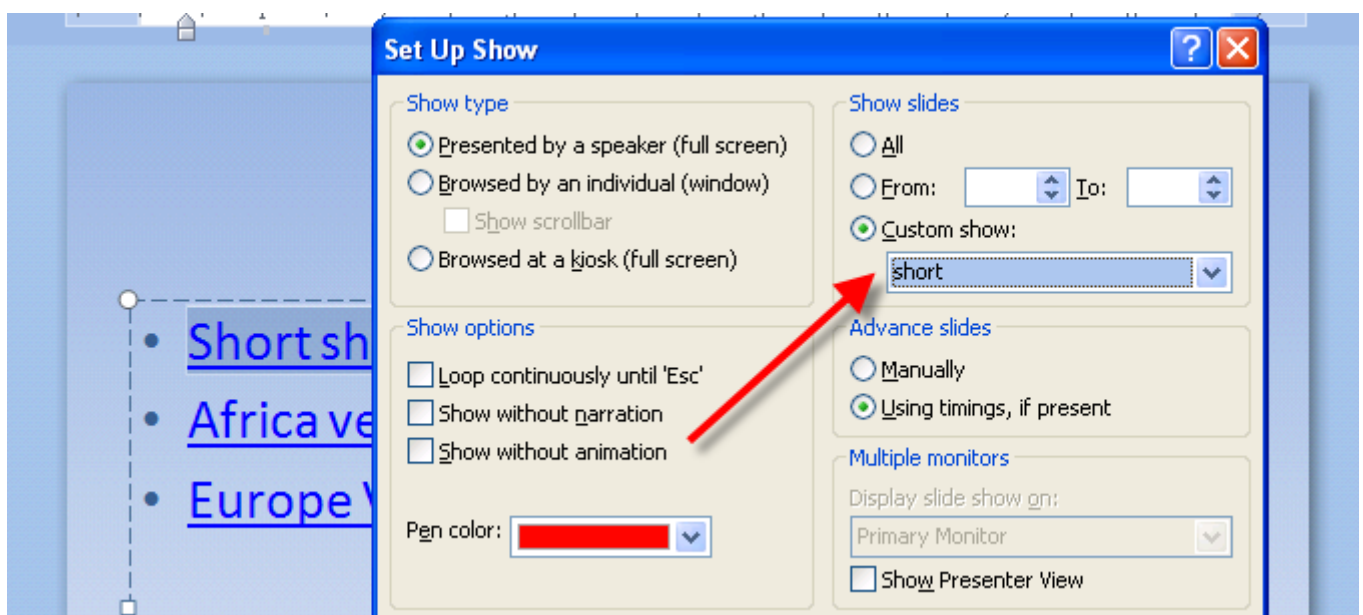
If you have a master presentation and create a series of sub shows in the form of custom shows then you can show just the chosen show in several ways.

Index

One method is to create an index. List the custom shows on the first slide and for each name create a hyperlink to the corresponding show. If you wish to return to the index when the custom show is over tick "Show and Return". If you want the show to end after the custom show leave this unticked.



You can also (temporarily) change the settings in Slide Show > Set up show to run just the custom show.



Create a StandAlone Presentation

You can probably see by now that you could easily have a master presentation containing many custom shows tailored to different occasions and use them as required. This is a great use of Custom Shows because any changes made to slides in the main presentation will always be reflected in all the custom shows and you can have named shows for different occasions or audiences.

Suppose now that you want to create a standalone presentation of the custom show for distribution that doesn't have the other slides at all. Simply put this is not really feasible. The only way is to use insert slides from files or copy and paste slides into a new presentation. If the master changes you will have to reinsert or re-paste slides to reflect the changes (and make sure that no changes are missed). It's a lot of work and you run the risk of the standalones not having the latest data.

You have probably guessed the next bit. We do this all the time and we cannot afford either time or possible variations. CUSTOM-CUT will produce a standalone version of any custom show with the latest updates of slides in seconds. This is also the way to get correctly numbered slides, notes or handouts.

Less Obvious Uses

Custom Shows have a couple of features which can be usefully used in PowerPoint presentations.

1. Animations always play even when a show is revisited many times
2. Mouseover activated animation (not really possible but a convincing illusion!)
3. The show and return feature always takes you back to the hyperlinking slide (even if several slides in the custom show have been played) This will happen when the custom show ends you do not need any link buttons!

Animation

When you hyperlink to a PowerPoint slide several times you will find that the animations only play on the first visit. If the slide you link to has been created as a custom show then the animations will always play.

Suppose that you have a quiz type presentation with a series of questions. If the correct button is clicked the show hyperlinks to a slide with “Woo Hoo Well Done!” animations and maybe sounds and if the incorrect button is clicked to a “Sorry” slide. In both cases a “Last slide Viewed” button returns to the quiz at the last question.

The problem here is that the clever animations don’t play after the first use of the hyperlink!

****HINT ****— I once saw a quiz where the wrong answer went to an animation of teacher walking the plank! Not surprisingly the students kept getting wrong answers! Keep the clever animation for the **CORRECT** answer.

Back to the problem:

You will find many suggestions on the web to insert a blank page with an auto transition of zero seconds before each animated slide and link to that. This resets the animations and in many circumstances works very well. In this case though when you press “Last Slide Viewed” nothing happens – You go back to the blank slide which immediately returns you to the “well done” slide.

Instead make the “Well done” slide a one slide custom show and hyperlink to it with “Show and Return” ticked. The slide will return to the question when a click finishes the custom show, you don’t even need an action button! If you want to be really smart give the “Well done” slide a slightly delayed auto transition and it will return itself!

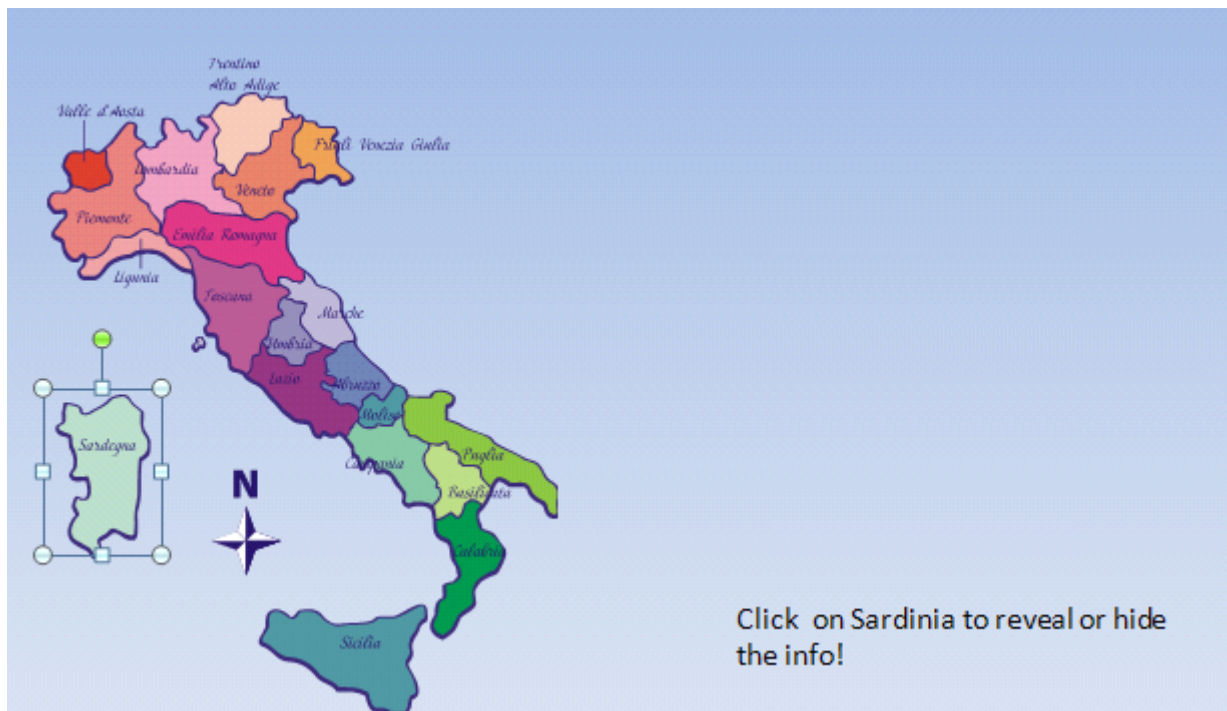
****HINT**** In the custom Show Transition as well as a delayed auto transition leave “on click” ticked. This way if the delay is too long then a simple click cuts it short.

Show and Return

Ticking “Show and Return” will bring you back to the original slide when the custom show ends. This allows you to link to a series of slides and then return to the original linking slide. You can use this in many ways here’s one example to give you the idea!

Hot Spots

On this slide we have created an invisible “hot spot”. It’s selected to make it visible but the shape has a 99% transparent fill and no line.



The “hot spot” has a hyperlink to a custom show with “Show and Return” ticked. This could be either a mouseover or click hyperlink.

The custom show has two slides. The first is a duplicate of the original with extra pop up information added. This information has a “with previous” entrance animation. The second slide is a duplicate of this slide but the animation is changed to an exit and this slide only has an auto transition of zero seconds.

You can also use just one “entrance slide” if you do not need an exit animation. (See the demo for an example of this)

The effect is clicking (or mouseover) the “hot spot” and the information seems to animate and appear, clicking anywhere takes us to the next slide and the pop up seems to exit and then we auto return to the original slide.

You can use this method to get the appearance of parts of a picture enlarging by making the pop up a larger version of a portion of the picture.

MouseOver Animation

Use a mouseover hyperlink to visit a custom show that is a duplicate of the last slide viewed with after previous animations added and an auto transition of zero seconds.

The animation will appear to play on mouseover of the link shape. As long as “Show and Return” is ticked the effect can be seamless.

Roll Over Image

You can use a variation of the mouseover animation to create a convincing roll over image effect similar to those on the internet.

The original slide has an image with a mouseover link to a custom show.

The first slide in this show has a new image fade in “with previous”. There is also a 99% transparent (invisible!) shape behind this image. This shape has a mouseover link to the second slide in the custom show. Once the mouse moves off the picture the second slide plays and shows the front image fading. The show then ends and takes us back to the original slide.

Demo

The PowerPoint file provided has demos of these effects for you to try

Custom-Cut

Custom-Cut is a small Add In for PowerPoint that allows you to create custom shows from the slide sorter or thumbnail view. You can SEE the content of the slides that you are adding and they will be added in the order that you select them! This makes creation of custom shows much easier.

Custom-Cut can also be used to create standalone presentations from any custom show. This makes distribution easy and also allows numbering to truly reflect the order of the show. If the content in the master presentation changes simply create a new standalone, overwriting the first. It takes only seconds!

Custom-Cut is only \$25.50

<http://PPTAlchemy.co.uk/Custom-Cut.html>